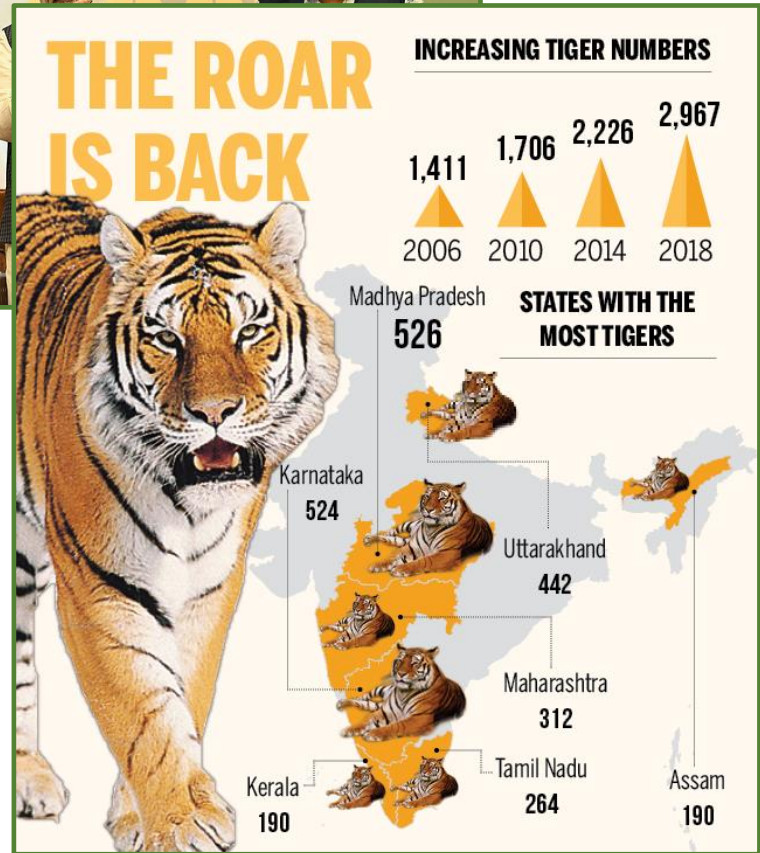




Indian Forest Service

भारतीय वन सेवा









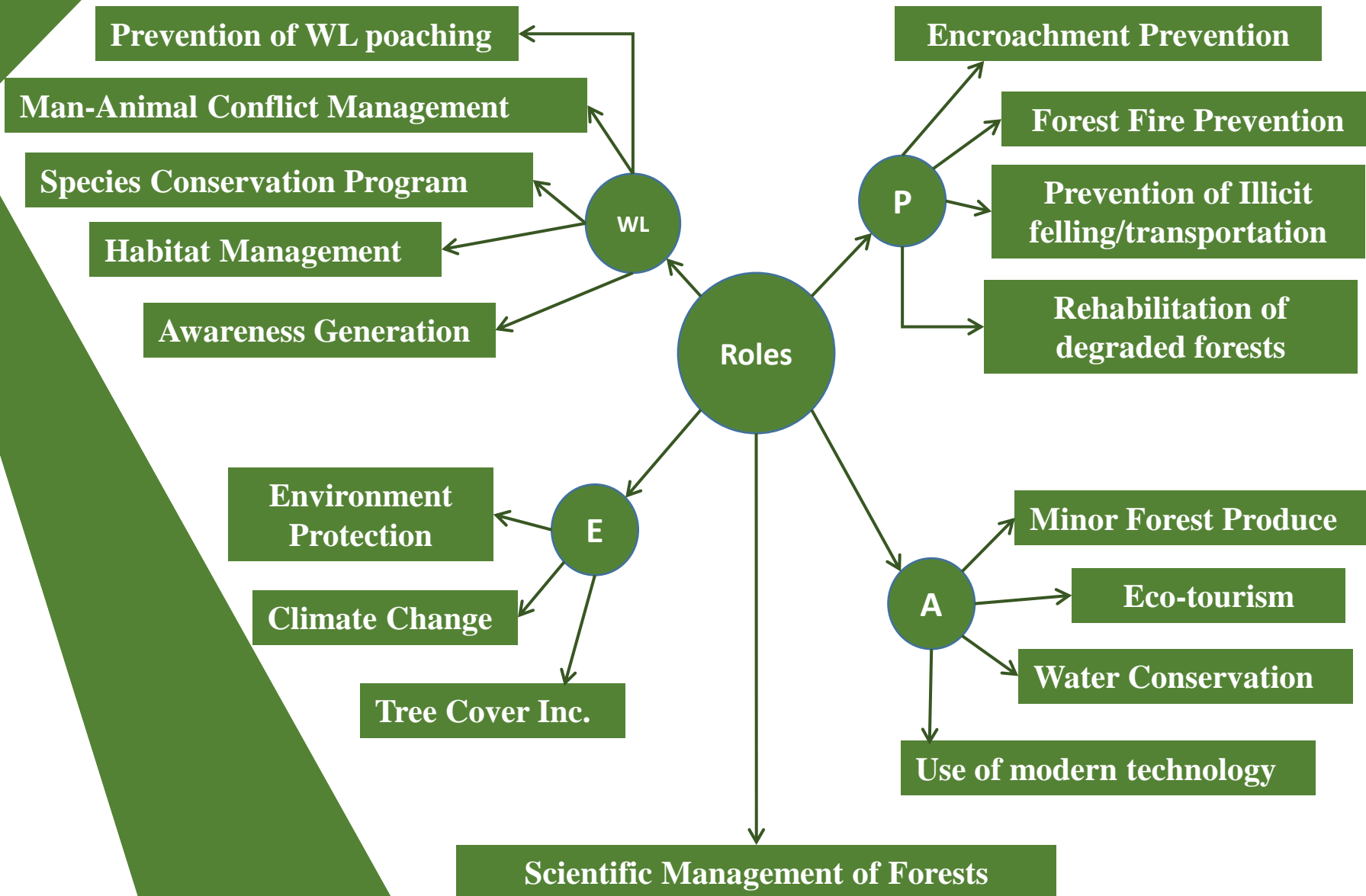




About IFS

- Nature of Work
- Acts being implemented by IFS
- Co-ordination with Police Service
- Rank Equivalence

Nature of Work



Management



- Health
- When to cut, how much ? Where?
- Carbon stock estimation

Scientific Management of Forests

Protection



Encroachment Prevention

Forest Fire Prevention

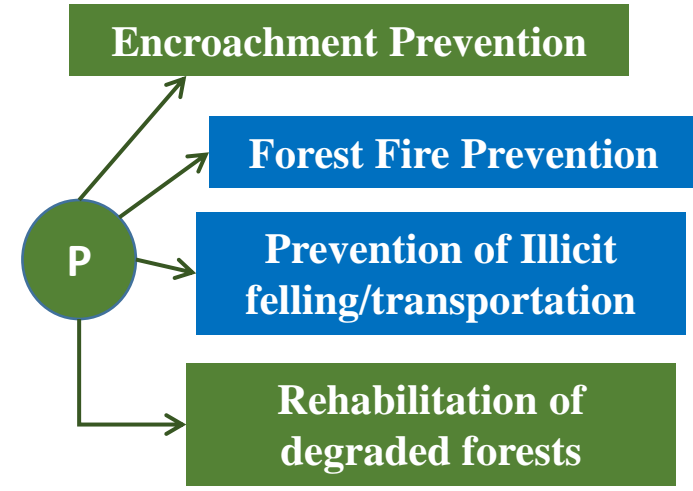
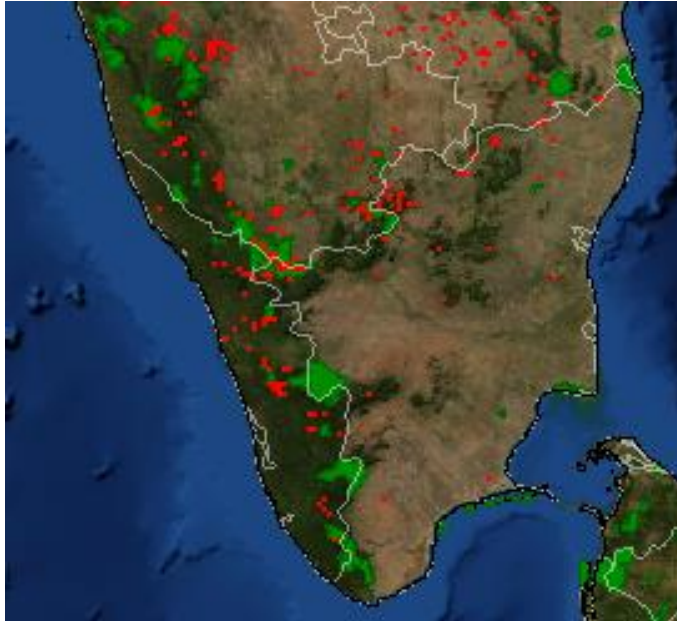
Prevention of Illicit felling/transportation

Rehabilitation of degraded forests

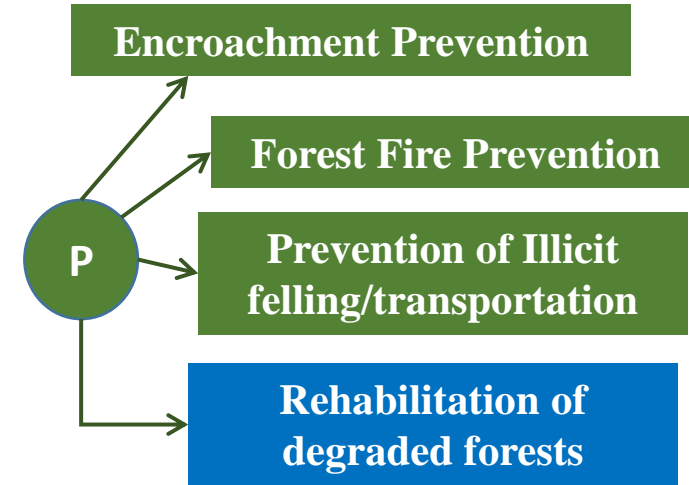
P



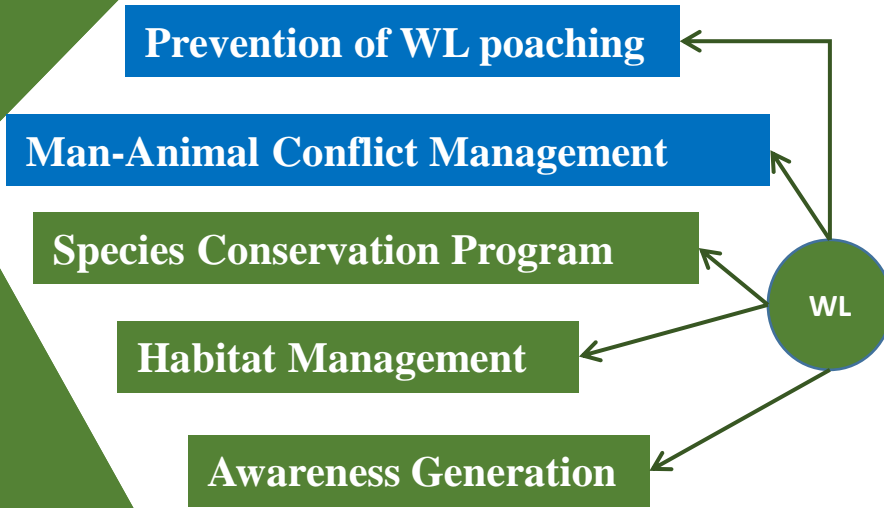
Protection



Protection



Wildlife



Wildlife

Prevention of WL poaching

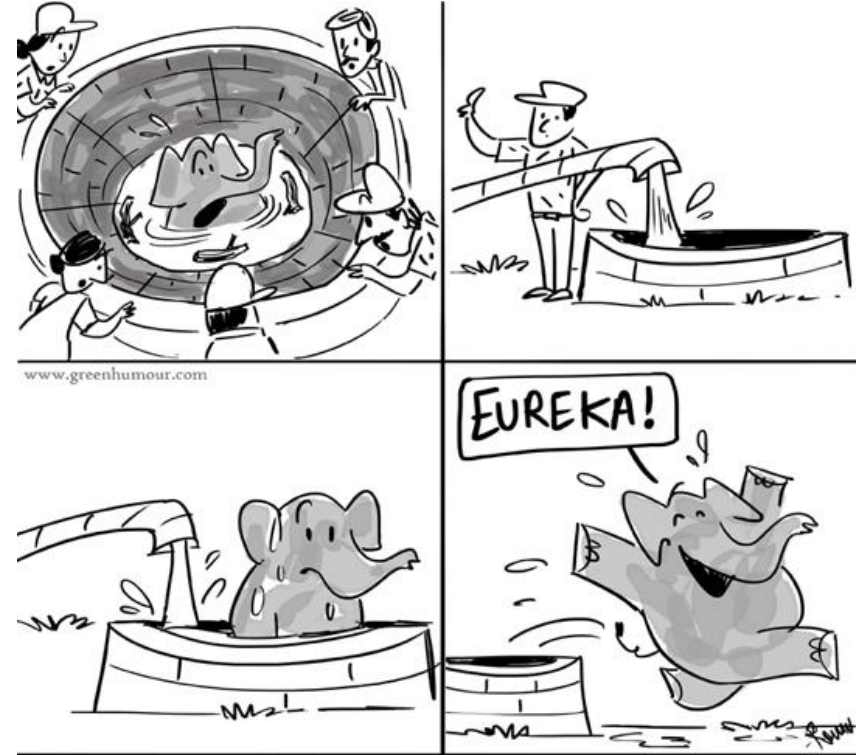
Man-Animal Conflict Management

Species Conservation Program

Habitat Management

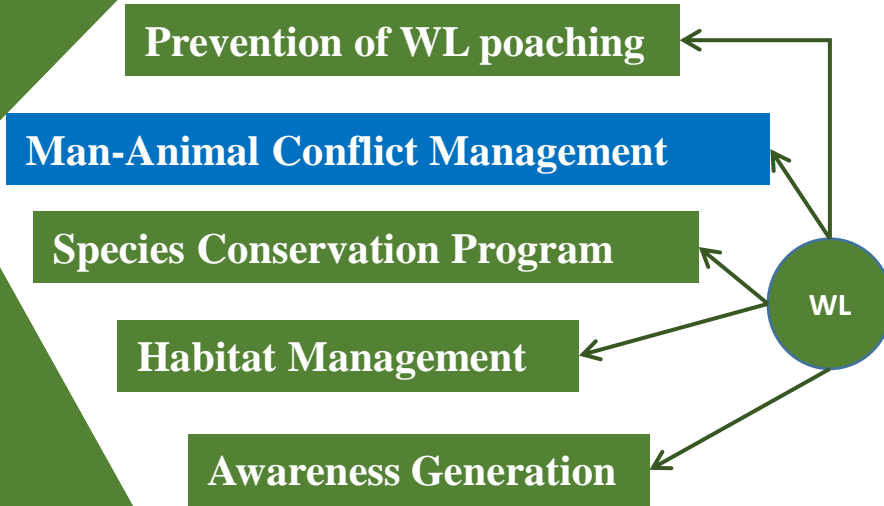
Awareness Generation

WL

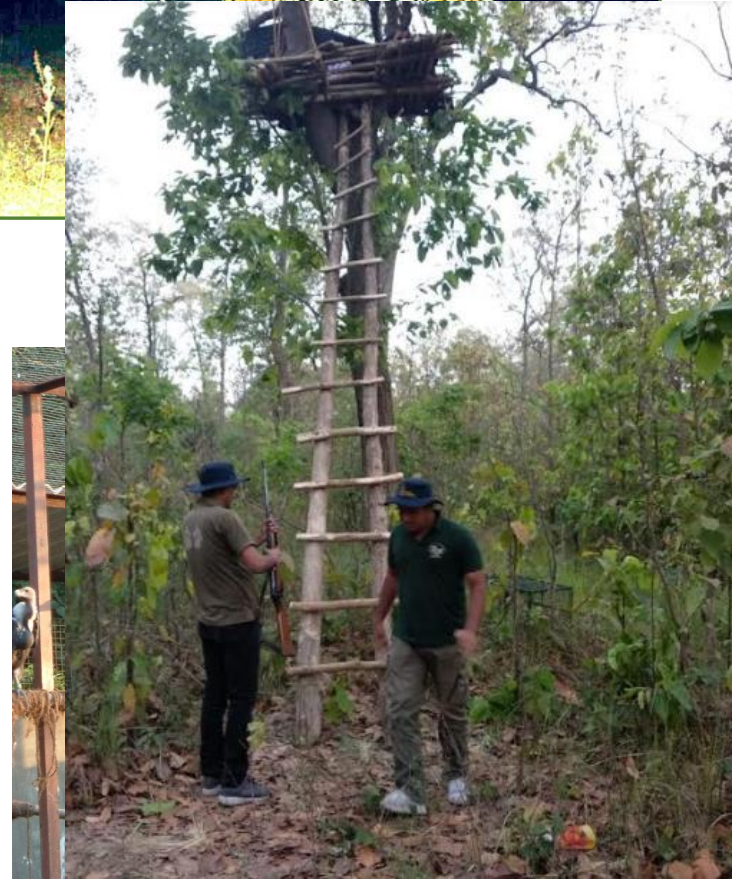
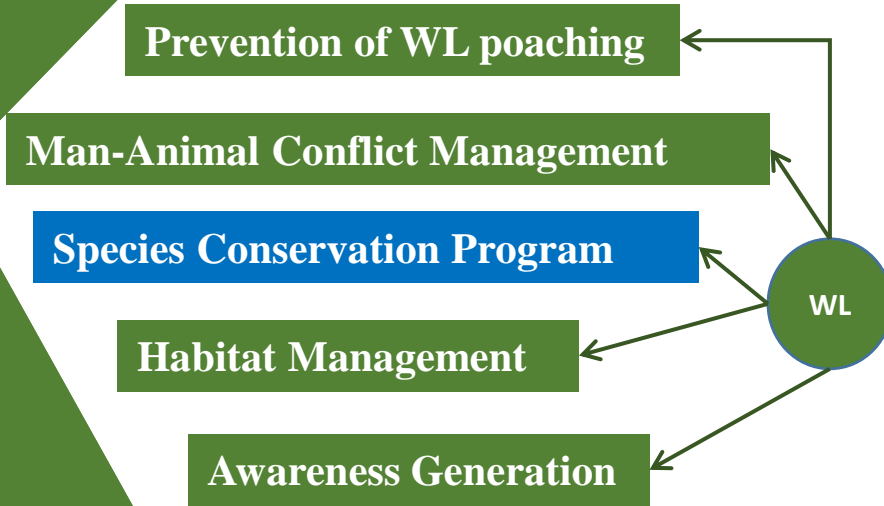


FOREST DEPARTMENT USES ARCHIMEDES' PRINCIPLE TO RESCUE AN ELEPHANT FROM A WELL IN GUMLA, JHARKHAND.

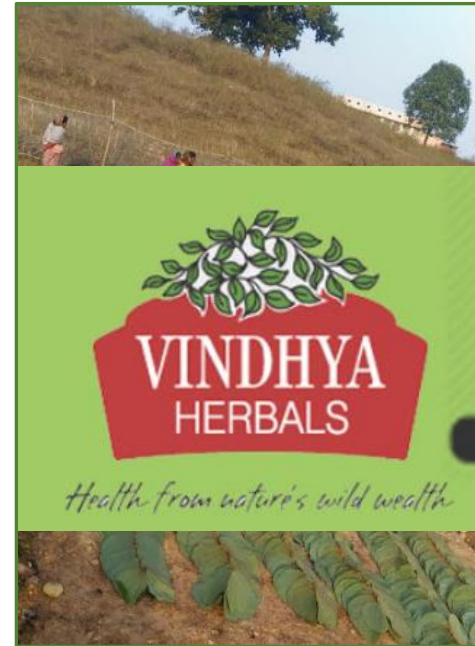
Wildlife



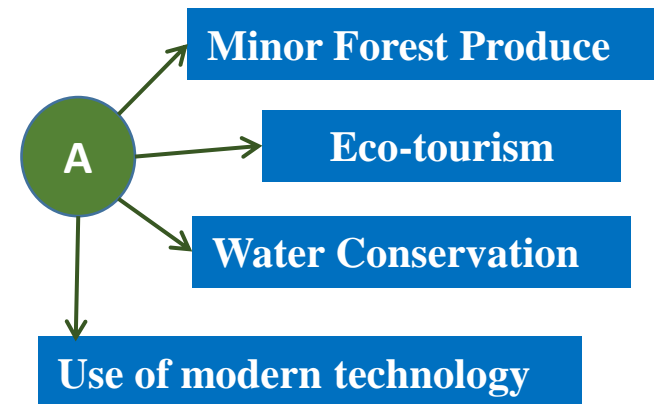
Wildlife



Ancillaries



Latitude: 23.852509
Longitude: 82.932534
Elevation: 431.77m



Environment Protection

DownToEarth

- India's forestry target is also very ambitious. It intends to create an additional carbon sink of 2.5 to 3 billion tonnes of CO₂ through additional forests by 2030. In comparison, China will increase the forest stock volume by around 4.5 billion cubic meters by 2030. This translates into an additional carbon sink of about 5 billion tonnes of CO₂. Considering that China has three times more land area than India, India's goal seems very ambitious.

Environment
Protection

E

Climate Change

Tree Cover Inc.

THIS STORY IS FROM SEPTEMBER 26, 2019

Maharashtra achieves 33 crore plantation target

Vijay Pinjarkar | TNN | Updated: Sep 26, 2019, 11:47 IST

✉ 🖨 A- A+



Representative image

NAGPUR: On September 24 evening, the state was short of 22 lakh saplings to achieve the set target of 33 crore plantations. At 2pm on September 25, the target was achieved. With this, Maharashtra has planted over 56 crore seedlings since 2016.

By evening, the 33 crore target crossed to over 33.12 crore with participation of over 92.32

lakh people at 2.78 lakh sites. The 'Greening Maharashtra' drive was officially launched in 2016 with 2 crore saplings but target was exceeded by planting 2.82



Major Acts implemented by IFS

1. Indian Forest Act, 1927 (with state amendments)
2. Wildlife Protection Act 1972
3. Forest Conservation Act, 1980
4. Forest Rights Act, 2006
5. Bio-Diversity Act, 2002
6. Environment Protection Act, 1986*
7. Global Commitments

Co-ordination with Police Forces



Video Link

Co-ordination with Police Forces

1. Law and order maintenance during man animal conflict
2. Jail facilities
3. Check Posts
4. Joint Patrolling
5. Encroachment Removal
6. Control on illegal mining from forest area



Rank Equivalence

Sl. No.	Indian Administrative Service	Indian Police Service	Indian Forest Service
1	Sub Divisional Magistrate (States) - SDM	Deputy Superintendent of Police - DSP	Assistant Conservator of Forests - ACF
2	Joint Collector /Additional District Magistrate(States)	Additional Superintendent of Police - ASP	
3	Deputy Commissioner /Collector/District Magistrate(States)	Superintendent of Police - SP	Divisional Forest Officer/Deputy Conservator of Forests - DFO/DCF
4	Director to Government of India/Deputy Commissioner/Collector/District Magistrate(States) (Selection Grade)	Senior Superintendent of Police - SSP	Deputy Conservator of Forests (India)/Director of Forestry(Selection Grade)
5	Commissioner	Deputy Inspector General of Police - DIG	Conservator of Forests - CF
6	Joint Secretary to Government of India/Secretary to State Govt.	Inspector General of Police - IG	Chief Conservator of Forests - CCF
7	Additional Secretary to Government of India/Principal Secretary to State Govt.	Additional Director General of Police - Add DGP	Additional Principal Chief Conservator of Forests - APCCF
8	Secretary to Government of India/Chief Secretary of State	Director General of Police - DGP	Principal Chief Conservator of Forests - PCCF
9		Director General of Police (State Police Chief)/Director Intelligence Bureau/Secretary RAW (R)/Director CBI/Director's General of CAPF's e.g. BSF, CRPF, CISF, ITBP, SSB etc./Director National Police Academy	Principal Chief Conservator of Forests, Head of Forest Forces (HoFF), Director General of Forests

Rank Equivalence



Support Staff Forests	Police Eq.	
Watcher		
Forest Guard		
Forester	Inspector, SI	
Ranger, RFO	SDPO	
ACF	ASP	
Indian Forest Service (state)	IFS (Wildlife)	IFS (Central Deputation)
DFO/DCF	Deputy Director, DFO (WL)	Additional Inspector General of Forests
DFO/DCF (Senior Time Scale)		
Conservator of Forests	Field Director, CCF (WL)	Deputy Inspector General of Forests, DIGF
Chief Conservator of Forests		
Additional Principal Chief Conservator of Forests		IGF
Principal Chief Conservator of Forests	Chief Wildlife Warden (CWLW), PCCF (WL)	Additional Director General of Forests, ADG
Principal Chief Conservator of Forests, Head of Forest Forces (HoFF)		DGF

Indian Forest Service



Voice of those who can't speak

- **Trees**
- **Wildlife**
- **Tribals**





Thank you